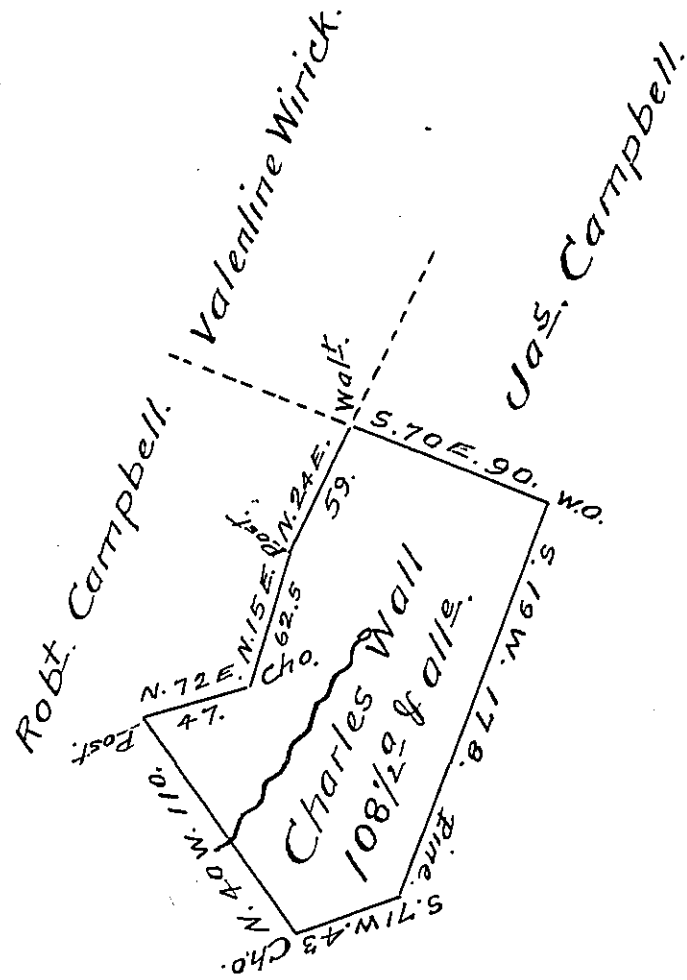


FORM NO. 1.



Situated on the Waters of Evitts Creek in -
 Cumberland Valley Township Bedford County Con-
 taining 108 1/2 Acres with the usual allowance of six
 P^c. Cent for Roads &c. Surveyed for Charles Wall
 the 20th Day of April 1793. on Warrant dated
 the 4th Day of November 1789.

George Woods Jun^r. D.S.
 To Daniel Brodhead Esq^r S.G.

IN TESTIMONY that the above is a copy of the original remaining on file in
 the Department of Internal Affairs of Pennsylvania, made
 conformably to an Act of Assembly approved the 16th day of
 February 1833, I have hereunto set my hand and caused
 the Seal of said Department to be affixed at Harrisburg,
 this fourteenth day of August 1907.

Henry Howard
 Secretary of Internal Affairs.